

September 26, 1960

TO ALL ROOTES GROUP DEALERS

On early Sunbeam Alpine cars, two different makes of propshaft were fitted, Hardy Spicer and B.R.D., and both had grease nipples for lubrication of the needle bearings which should receive lubrication as recommended.

On later cars, these two makes of propshaft are still fitted, but the B.R.D. propshaft incorporates sealed type needle bearings, which can be identified by the Allen screws fitted to the journals in place of grease nipples.

Under no circumstances should the Allen screws be removed and grease nipples fitted, as if lubricant is forced into the B.R.D. sealed bearings, the sealing washers will be damaged and allow entrance of dirt and water.

The attached illustration shows the Maker's identification marks on the Hardy Spicer and B.R.D. propshafts.

Kindly bring this to the attention of all Service personnel.

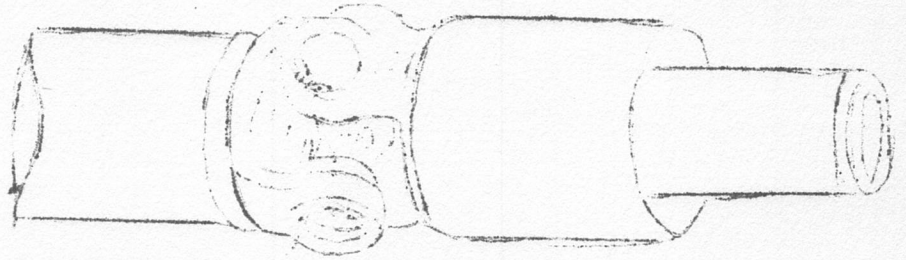
ROOTES MOTORS INCORPORATED



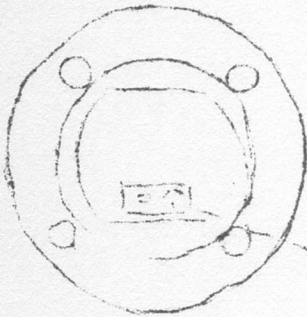
F. J. McGettrick
Manager
Wholesale Parts & Service Depts.

FJMcG:SO
encl.

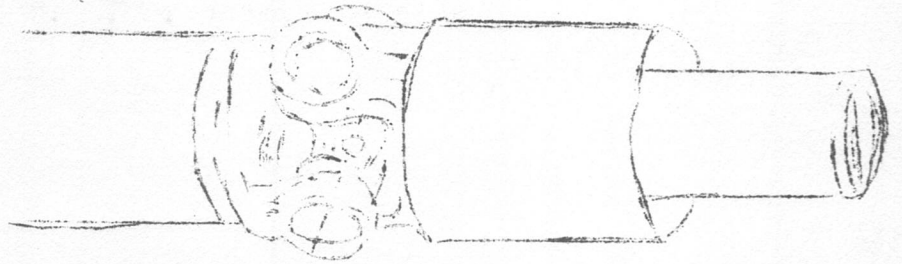
HARDY SPICER IDENTIFICATION



GREASERS



B. R. D. Identification



ALLEN SCREWS (PREPARED BEARINGS)
DO NOT FIT GREASERS.