

MISCELLANEOUS

No. 238

May 2, 1961.

TO ALL ROOTES GROUP DEALERS

SUNBEAM ALPINE

BOOT LOCK

We have received a number of complaints from owners and Dealers relative to the boot lid of Sunbeam Alpines coming open when the vehicle is in motion.

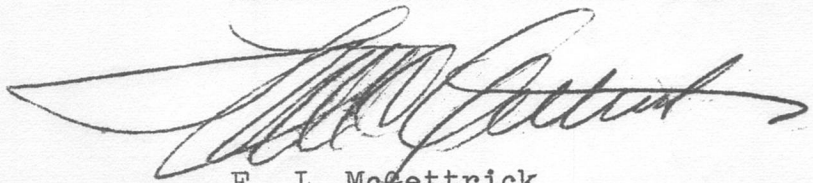
Our overseas Production advises the cause of this has been relegated to the lack of sufficient tension on the retainer spring of the lock assembly itself and present production includes a higher tension spring being fitted.

To overcome this problem in service, however, attached is a diagram indicating a small modification which we know to be 100% effective in eliminating this problem.

The attached schematic is self-explanatory and we feel you should have no trouble making this slight modification whenever owners confront your location with this problem.

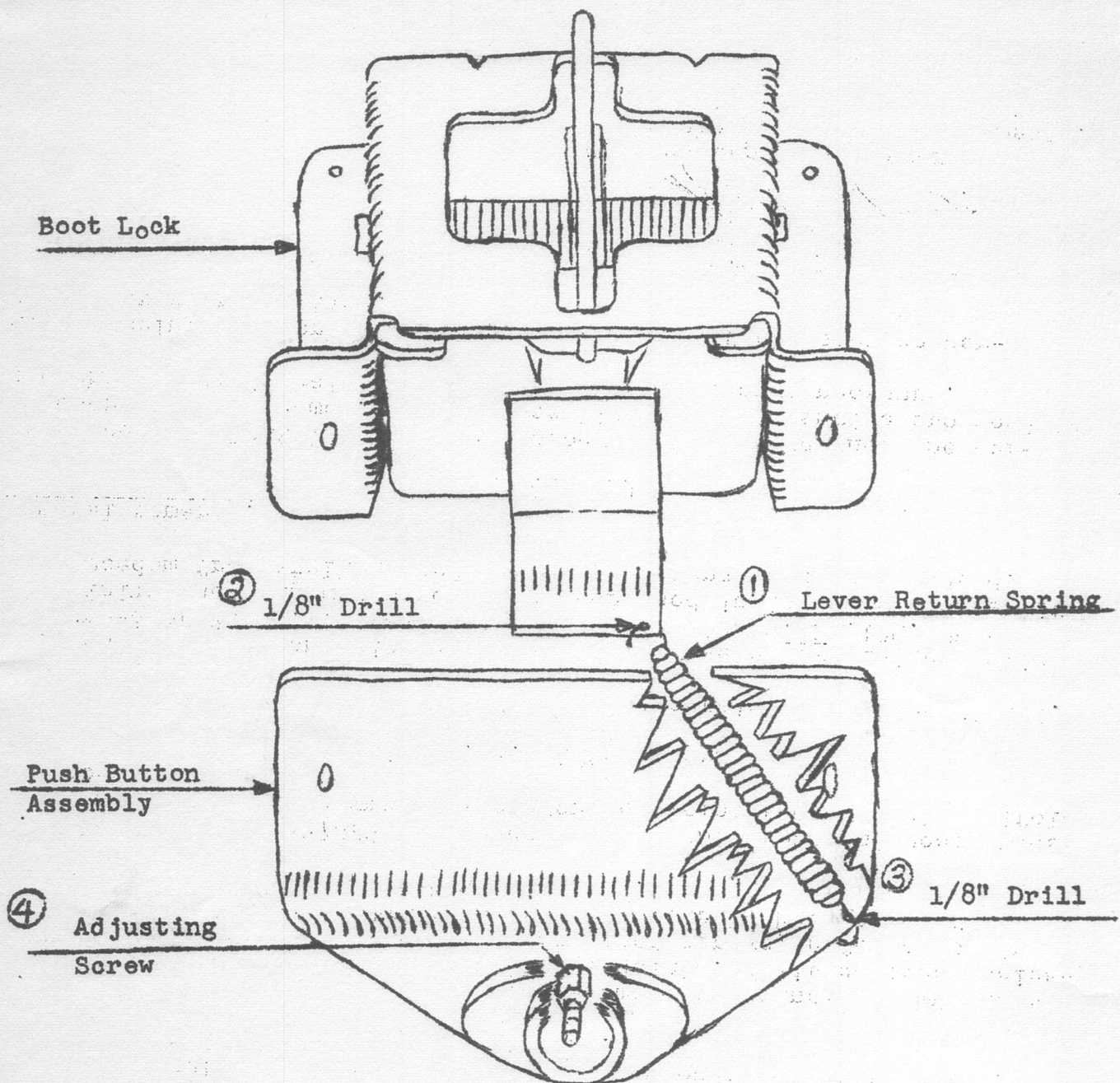
Kindly bring the above to the attention of all concerned.

ROOTES MOTORS INCORPORATED



F. J. McFettrick
Manager
Wholesale Parts & Service Depts.

FJMcG:S0
encl.



1. Striker Plate Spring $1\frac{1}{2}$ " Long
5 - 7 lb. Pull
2. $1/8$ " Drill in striker plate
3. $1/8$ " Drill in lock housing
4. Striker Plate Screw to be adjusted
so that a clearance of .020 remains
between plate and screw.